

Twice Tied

Designed by Kim Andersson, Interpreted & Written by Stacey Day
Featuring Kim Andersson's *Good Hair Day* Collection

SIZE: 66" x 88"

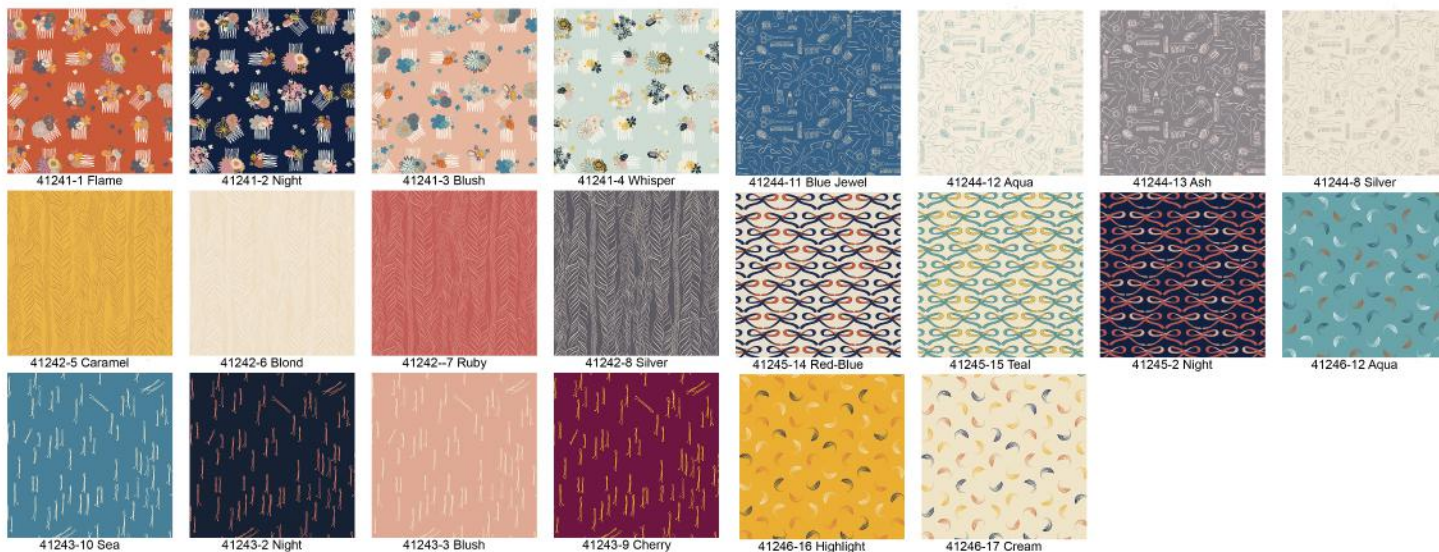


PLEASE NOTE: QUILT IMAGE SHOWN IS A DIGITAL REPRESENTATION, FABRIC LOOK MAY VARY ON YOUR PROJECT.
VISIT OUR *FREE PROJECT* SECTION ONLINE FOR ANY PATTERN UPDATES BEFORE STARTING QUILT PROJECT.



Twice Tied

Page 2



Fabric Requirements

5 yards 41244-8 Silver for Background

1/2 yard 41243-10 Sea for Binding

1 Good Hair Day Fat Quarter Bundle, using the following prints: 41241-1 Flame, 41241-2 Night, 41241-3 Blush, 41241-4 Whisper, 41242-5 Caramel, 41242-7 Ruby, 41242-8 Silver, 41243-2 Night, 41243-3 Blush, 41243-9 Cherry, 41243-10 Sea, 41244-11 Blue Jewel, 41244-13 Ash, 41245-2 Night, 41245-14 Red Blue, 41245-15 Teal, 41246-12 Aqua, 41246-16 Highlight, 41246-17 Cream

74"x 92" piece of batting

Cutting

From the 41244-8 Silver cut:

- (1) 22 1/8" square, cut on the diagonal to make (2) Half Square Triangles (HST)
- (1) 20 7/8" square, cut on the diagonal to make (2) HST
- (1) 18 5/8" square, cut on the diagonal to make (2) HST
- (2) 10 1/2"x 15 1/2" rectangles
- (4) 5 1/2"x 15 1/2" rectangles
- (8) 5 1/2"x 10 1/2" rectangles
- (24) 5 1/2"squares
- (2) 10 1/2"x 42" strips
- (2) 10 1/2"x 33 1/2" strips
- (2) 7 1/2" x 42" strips
- (2) 7 1/2"x 25" strips

Twice Tied

Page 3

From the 41241-1 Flame cut:

(2) 5 1/2" squares

From the 41241-2 Night cut:

(4) 5 1/2" squares

(1) 5 1/2"x 10 1/2" rectangle

From the 41242-5 Caramel cut:

(1) 5 1/2" square

(1) 5 1/2"x 10 1/2" rectangle

From the 41242-7 Ruby cut:

(1) 5 1/2"x 15 7/8" rectangle

From the 41242-8 Silver cut:

(1) 5 1/2"x 15 7/8" rectangle

From the 41243-2 Night cut:

(1) 5 1/2"x 15 7/8" rectangle

(2) 5 1/2" squares

From the 41243-3 Blush cut:

(1) 5 1/2"x 15 1/2" rectangle

From the 41243-9 Cherry cut:

(1) 5 1/2" square

From the 41243-10 Sea cut:

(1) 5 1/2"x 15 7/8" rectangle

(8) 2 1/4"x 42" strips for binding

From the 41244-11 Blue Jewel cut:

(1) 5 1/2"x 10 1/2" rectangle

(1) 5 1/2" square

From the 41241-3 Blush cut:

(1) 5 1/2"x 15 1/2" rectangle

From the 41241-4 Whisper cut:

(1) 5 1/2"x 15 1/2" rectangle

From the 41244-13 Ash cut:

(2) 5 1/2" squares

From the 41245-2 Night cut:

(1) 5 1/2"x 10 1/2" rectangle

(1) 5 1/2" square

From the 41245-14 Red Blue cut:

(1) 5 1/2"x 10 1/2" rectangle

From the 41245-15 Teal cut:

(1) 5 1/2"x 10 1/2" rectangle

From the 41246-12 Aqua cut:

(1) 5 1/2"x 15 1/2" rectangle

From the 41246-16 Highlight cut:

(1) 5 1/2"x 15 1/2" rectangle

From the 41246-17 Cream cut:

(1) 5 1/2"x 15 1/2" rectangle

Twice Tied

Page 4

Instructions

All seam allowances are 1/4"

Making the Blocks

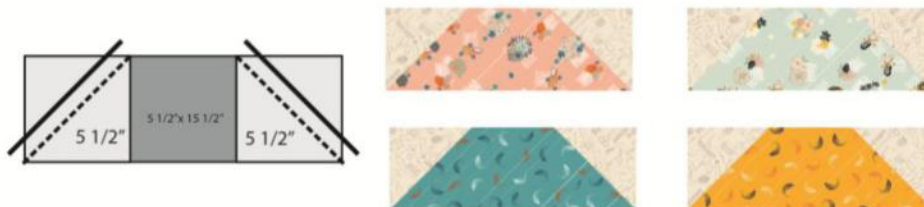
1. Take the 41242-7 Ruby 5 1/2"x 15 7/8" rectangle and place a 41244-8 Silver 5 1/2" square right side together in the left corner. Sew a diagonal line as shown from the top right of the square to the bottom left. Trim the seam allowance to 1/4" and press towards the Ruby. Repeat for the 41248-2 Silver 5 1/2"x 15 7/8" rectangle.



2. Take the 41243-2 Night 5 1/2"x 15 7/8" rectangle and place a 41244-8 Silver 5 1/2" square right side together in the right corner. Sew a diagonal line as shown from the top left of the square to the bottom right. Trim the seam allowance to 1/4" and press towards the Night. Repeat for the 41243-10 Sea 5 1/2"x 15 7/8" rectangle.



3. Take the 41241-3 Blush 5 1/2"x 15 1/2" rectangle and place a 41244-8 Silver 5 1/2" square right side together in both corners. Sew a diagonal line one each side as shown, from the top inside of the square to the bottom outside. Trim the seam allowance to 1/4" and press towards the Blush. Repeat for the 41241-4 Whisper, 41246-12 Aqua, and 41246-16 Highlight 5 1/2"x 15 1/2" rectangles.



Twice Tied

Page 5

4. Take the 41243-3 Blush 5 1/2"x 15 1/2" rectangle and place a 41244-8 Silver 5 1/2" square right side together in both corners. Sew a diagonal line one each side as shown, from top right to bottom left on each square. Trim the seam allowance to 1/4" and press towards the Blush. Repeat for the 41246-17 Cream 5 1/2"x 15 1/2" rectangle.



5. Take the 41245-14 Red Blue 5 1/2"x 15 1/2" rectangle and place a 41244-8 Silver 5 1/2" square right side together in both corners. Sew a diagonal line one each side as shown, from top left to bottom right on each square. Trim the seam allowance to 1/4" and press towards the Red Blue. Repeat for the 41245-15 Teal 5 1/2"x 15 1/2" rectangle.



6. Take the 41241-2 Night 5 1/2"x 10 1/2" rectangle and place a 41244-8 Silver 5 1/2" square right side together on the left side. Sew a diagonal line as shown from top left to bottom right of the square. Trim the seam allowance to 1/4" and press towards the Night. Take a 41244-8 Silver 10 1/2"x 15 1/2" rectangle and sew it to the bottom of the piece, press towards the Night. Repeat for the 41245-2 Night 5 1/2"x 10 1/2" rectangle.



Twice Tied

Page 6

7. Take the 41242-5 Caramel 5 1/2"x 10 1/2" rectangle and place a 41244-8 Silver 5 1/2" square right side together on the right side. Sew a diagonal line as shown from top right to bottom left of the square. Trim the seam allowance to 1/4" and press towards the Caramel. Repeat for the 41244-11 Blue Jewel 5 1/2"x 10 1/2" rectangle.



8. Take a 41241-2 Night 5 1/2" square and place it right sides together on the left of a 41244-8 Silver 5 1/2"x 15 1/2" rectangle. Sew a diagonal line as shown from the top left to bottom right of the square. Trim the seam allowance to 1/4" and press towards the Night. Repeat for the 41245-2 Night 5 1/2"square.



9. Take the 41242-5 Caramel 5 1/2" square and place it right sides together on the right of a 41244-8 Silver 5 1/2"x 15 1/2" rectangle. Sew a diagonal line as shown from the top right to bottom left of the square. Trim the seam allowance to 1/4" and press towards the Caramel. Repeat for the 41244-11 Blue Jewel 5 1/2"square.



10. Take a 41241-1 Flame 5 1/2" square and place it right sides together on the right of a 41244-8 Silver 5 1/2"x 10 1/2" rectangle. Sew a diagonal line as shown from the top left to bottom right of the square. Trim the seam allowance to 1/4" and press towards the Flame. Sew the remaining 41241-1 Flame 5 1/2" square to the opposite side and press towards the Flame. Repeat for the 41244-13 Ash 5 1/2"squares.



Twice Tied

Page 7

11. Take a 41241-2 Night 5 1/2" square and place it right sides together on the left of a 41244-8 Silver 5 1/2"x 10 1/2" rectangle. Sew a diagonal line as shown from the top right to bottom left of the square. Trim the seam allowance to 1/4" and press towards the Night. Sew a 41241-2 Night 5 1/2" square to the opposite side and press towards the night. Repeat for the 41243-2 Night 5 1/2"squares.



12. Take the remaining 41241-2 Night 5 1/2" square and sew a 41244-8 Silver 5 1/2"x 10 1/2" rectangle to either side. Press towards the Night. Repeat for the 41243-9 Cherry 5 1/2" square.



13. Take the 41244-8 Silver 7 1/2"x 42" strips and sew a 41244-8 Silver 7 1/2"x 25" strip to the end of each, to make (2) horizontal borders 7 1/2"x 66 1/2". Repeat with the 41244-8 Silver 10 1/2"x 42" strips and 41244-8 Silver 10 1/2"x 33 1/2" strips to make (2) vertical borders 10 1/2"x 75". Set the borders aside for now.

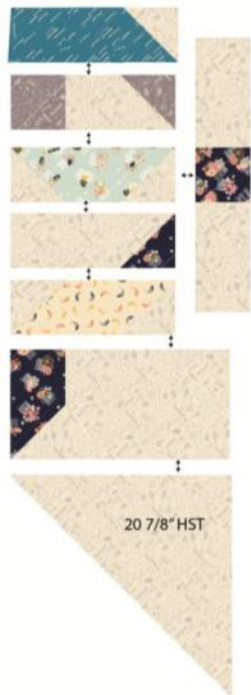
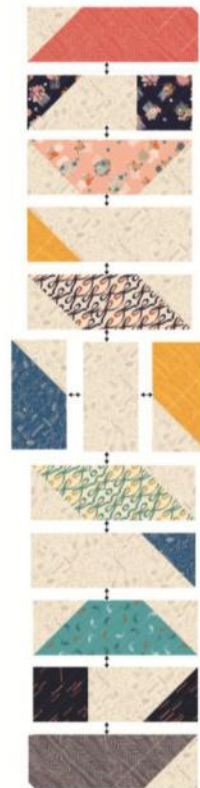
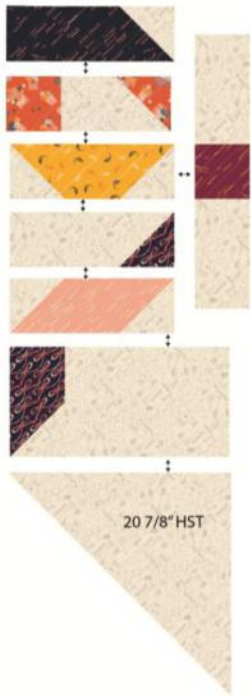
Making the Top

14. Carefully following the diagrams below for piece placement and orientation, sew all the pieces made in steps 1 through 12, and the 41244-8 Silver 20 7/8" HST into (3) sections- A, B, and C. Press the Section A and C seams to the left, and the Section B seams to the right. NOTE: the pieces made in steps 1 and 2 will be slightly longer than the rest of the section, so make sure to align the pieces exactly as shown in the diagrams. This extra length will be trimmed off in a later step.

15. Sew Sections A, B, and C together, matching seam allowances carefully when necessary and pressing the seams in the same direction. Take the 41244-8 Silver 18 5/8" HST and 41244-8 Silver 22 1/8" HST, and sew them to the corners as shown. Press towards the quilt center, and then trim the entire quilt top to 46 1/2"x 75". Take care when trimming and pressing, as the quilt will be on a bias and prone to stretching.

Twice Tied

Page 8



Twice Tied

Page 9

16. Take the vertical borders and sew them to the quilt top, matching ends and centers carefully. If the quilt top has stretched, gently ease the top to the border by placing the quilt top against the feed dogs when sewing. Press towards the quilt top, then repeat for the horizontal borders. Press the quilt top well.

17. Layer the quilt top with batting and backing; baste. Quilt as desired. Join the 41243-10 Sea 2 1/4" wide binding strips using a diagonal seam to make the binding. Sew the binding around the quilt top. Turn the binding to the back and secure in place by hand or machine. Label and enjoy!

